

Enerbau: Panele grzewcze na podczerwień

Panele grzewcze Ecosun E,G

Typ ECOSUN G
IP 44

Wymiary (mm) Moc (W)

OBRAZ 300W 600x600 300W

OBRAZ 600W 1200x600 600W



SZKLANE
PANELE I
LUSTRA
Typ ECOSUN G
IP 44

Wymiary (mm) Moc (W) Waga (Kg) Napięcie (V)

300 G 600x600x50 300W 7 230

600 G 1200x600x50 600W 14 230

300 G LUSTRO 600x600x50 300W 10,2 230

600 G LUSTRO 1200x600x50 600W 19 230



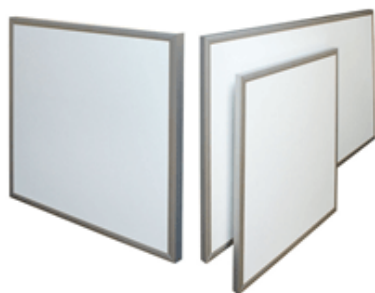
Typ ECOSUN E
IP 44

Wymiary (mm) Moc (W) Waga (Kg) Napięcie (V)

300 E 600x600x50 300W 6,6 230

600 E 1200x600x50 600W 11,3 230

850 E 1200x800x50 850W



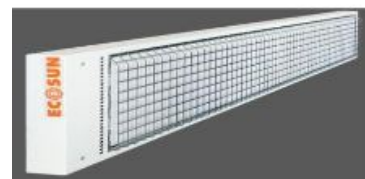
Panele grzewcze Ecosun K+

TYP	MOC (W)	NAPIĘCIE(V)	WYMIARY(MM)	WAGA(KG)	SPOSÓB MONTAŻU (M)
ECOSUN 100 K+	100	230	500X320X30	2,5	VERTIKALNIE I HORYZONTALNIE
ECOSUN 200 K+	200	230	750X320X30	3,7	VERTIKALNIE I HORYZONTALNIE
ECOSUN 270 K+	270	230	1000X320X30	5,2	VERTIKALNIE I HORYZONTALNIE
ECOSUN 330 K+	330	230	1250X320X30	6,6	VERTIKALNIE I HORYZONTALNIE
ECOSUN 400 K+	400	230	1500X320X30	7,9	VERTIKALNIE I HORYZONTALNIE

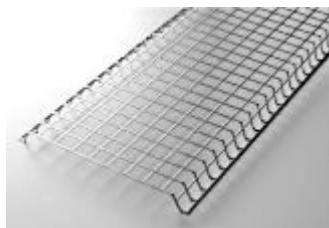


Wysokotemperaturowe panele grzewcze Ecosun S+

Typ	Moc (W)	Napięcie(V)	Wymiary (mm)
S+ 09	900	230	1550x150x60
S+ 12	1200	230	1550x150x60
S+ 18	1800	230/400	1550x250x60
S+ 24	2400	230/400	1550x250x60
S+ 30	3000	230/400	1550x350x60
S+ 36	3600	230/400	1550x350x60









Kratka ochronna
09-12
18-24
30-36



Uchwyt obrotowy S+



PANELE GRZEWCZE ECOSUN GS

TYP	MOC (W)	NAPIĘCIE (V)	WYMIARY (MM)	WAGA (KG)	
ECOSUN GS 300 WHITE	300	230	585x585x39	7.3	
ECOSUN GS 600 WHITE	600	230	1185x585x39	13.6	
ECOSUN GS 850 WHITE	850	230	1185x785x39	16.5	
ECOSUN GS 300 BLACK	300	230	585x585x39	7.3	
ECOSUN GS 600 BLACK	600	230	1185x585x39	13.6	
ECOSUN GS 850 BLACK	850	230	1185x785x39	15.5	
ECOSUN GS 850 BLACK	300	230	585x585x39	9.8	
ECOSUN GS 600 MIRROR	600	230	1185x585x39	18.9	

KONTAKT



[Enerbau](http://enerbau.pl)

E-mail: info@enerbau.pl

WWW: www.enerbau.pl

Tel: +48 56 622 05 00

Adres:

Kopernika 5
87-200 Wąbrzeźno

